



GRANT[®]

Driving Accessories Catalog

GRANT PRODUCTS INTERNATIONAL, INC.
615 Elca Lane Suite E, Brownsville, TX
956-542-2620

Visit Grant on the Web: www.grantproducts.com



GRANT[®]

Driving Accessories Catalog



2015

WHEN YOUR HANDS DEMAND THE BEST!

GRANT HISTORY

Grant Products automotive heritage began in 1922 with the founding of the Grant Company by Gerry Grant. Over the years Grant's products have offered engine overhaul kits, piston rings, valve spring inserts, ignition systems and safety helmets. In 1962 we introduced the first Grant Steering Wheel for dune buggies and quickly added steering wheels for the automotive aftermarket.

utility vehicles, marine industry, heavy-duty trucks, and the RV/Motorhome industry. Our newest products include an expanded offering of steering wheels for racing and offroad vehicles. Grant operates four modern factories with two in Matamoros, Mexico, one in Spain, and one in Brownsville, Texas. Grant manufactures steering wheels that add personal style to a wide range of vehicles. Grant has always offered innovative, fine quality products, with distinctive style, solid value and a wide selection of designs to express your individual personality.

Today Grant manufactures a complete line of custom steering wheels and accessories. Grant produces wheels that are designed for the automotive aftermarket, racing, golf carts,

| | | | | | |
|--|--|---|--|--|---|
|  <p>1922 Grant, founded by Gerry Grant, opens for business producing piston rings.</p> |  <p>1952 Founder Gerry Grant helps design a specially prepared Ferrari that was run at the INDY "500".</p> |  <p>1963 Grant becomes founding Member of SEMA.</p> |  <p>1975 The first Formula GT Steering Wheel was introduced.</p> |  <p>1986 Introduced Vehicle Security System. "NO WHEEL NO STEAL" Features a removable Steering Wheel to deter theft.</p> |  <p>2008 Official launch of the NEW Replacement Airbag Steering Wheel Line.</p> |
| <p>1922</p> |  <p>1955 Bonneville salt flats speed record for the Mobil "Jr" Special using Grant Piston Rings.</p> | <p>1963</p> | <p>1975</p> | <p>1986</p> | <p>2008</p> |

GRANT®



Airbag Solutions



UTV / Golf Carts



Marine



Racing



Classic Car & Truck

Heritage



5-6

Performance



12-19

Classic



21-26

Accessories



31-32

TABLE OF CONTENTS

The Heritage Collection.....5
 Banjo Style Wheels.....7
 Collectors Edition.....9
 Mahogany Wheels.....10
 Performance Wheels.....12
 Racing & Performance.....19
 Grant Racing.....20
 Challenger Wheels.....22
 Classic Series.....23
 Classic Nostalgia Series.....26
 Horn Buttons.....29
 Accessories.....31
 Installation Kits.....33

NEW Signature Series.....9
NEW Racing & Performance.....19
NEW Classic Series.....23

GRANT

FACTORY DIRECT

\$80
CASH BACK

GRANT
BUY BACK PROGRAM



FORD AUTOMOBILES

(all models with leather grip and cruise control)

| Make | Year(s) | Model(s) | Black/Black | Black/Grey | Black/Red |
|------|-----------|----------|-------------|------------|-----------|
| Ford | 2005-2009 | Mustang | 52100 | 52101 | 52103 |
| Ford | 2010-2014 | Mustang | 52200 | 52201 | 52203 |



\$185
CASH BACK

2005-2009
Mustang

DODGE AUTOMOBILES

(with silver trim on bottom spokes)

| Make | Year(s) | Model(s) | Dark Slate/Black | Dark Slate/Grey | Dark Slate/Red |
|----------|-----------|------------|------------------|-----------------|----------------|
| Chrysler | 2005-2010 | 300 Series | 64200 | 64201 | 64203 |
| Dodge | 2008-2012 | Challenger | 64200 | 64201 | 64203 |
| Dodge | 2006-2010 | Charger | 64200 | 64201 | 64203 |
| Dodge | 2005-2008 | Magnum | 64200 | 64201 | 64203 |

(without silver trim on bottom spokes)

| Make | Year(s) | Model(s) | Dark Slate/Black | Dark Slate/Grey | Dark Slate/Red |
|----------|-----------|------------|------------------|-----------------|----------------|
| Chrysler | 2005-2010 | 300 Series | 64100 | 64101 | 64103 |
| Dodge | 2008-2010 | Challenger | 64100 | 64101 | 64103 |
| Dodge | 2006-2010 | Charger | 64100 | 64101 | 64103 |
| Dodge | 2005-2008 | Magnum | 64100 | 64101 | 64103 |

\$120
CASH BACK

GRANT
BUY BACK
PROGRAM



GM AUTOMOBILES

(automatic transmissions)

| Make | Year(s) | Model(s) | Black/Black | Black/Grey | Black/Red |
|-----------|-----------|----------|-------------|------------|-----------|
| Chevrolet | 2010-2014 | Camaro | 61200 | 61201 | 61203 |

(manual transmissions)

| Make | Year(s) | Model(s) | Black/Black | Black/Grey | Black/Red |
|-----------|-----------|----------|-------------|------------|-----------|
| Chevrolet | 2010-2014 | Camaro | 61210 | 61211 | 61213 |

\$241
CASH BACK

GRANT
BUY BACK
PROGRAM



GM TRUCKS

| Make | Year(s) | Model(s) | Black | Black/Red | Burlwood | Silver |
|------------|-----------|---|-------|-----------|----------|--------|
| Cadillac | 2003-2006 | Escalade, Escalade Ext, Escalade ESV (old body style) | 61030 | 61033 | 61035 | 61036 |
| Chevrolet | 2003-2006 | Silverado Pickup, Avalanche, Suburban, Tahoe, Express Van | 61030 | 61033 | 61035 | 61036 |
| | 2007-2008 | Express Van (old body style) | 61030 | 61033 | 61035 | 61036 |
| | 2002-2009 | Trailblazer | 61030 | 61033 | 61035 | 61036 |
| GMC | 2003-2006 | Sierra Pickup, Yukon, Yukon XL, Denali, Savana Van | 61030 | 61033 | 61035 | 61036 |
| | 2007-2008 | Savana Van (old body style) | 61030 | 61033 | 61035 | 61036 |
| | 2002-2009 | Envoy | 61030 | 61033 | 61035 | 61036 |
| Hummer | 2002-2006 | H2 | 61030 | 61033 | 61035 | 61036 |
| Oldsmobile | 2002-2004 | Bravada | 61030 | 61033 | 61035 | 61036 |
| Cadillac | 2007-2013 | Escalade, Escalade Ext, Escalade ESV (new body style) | 61040 | 61043 | 61045 | 61046 |
| Chevrolet | 2007-2013 | Silverado Pickup, Avalanche, Suburban, Tahoe | 61040 | 61043 | 61045 | 61046 |
| | 2008-2013 | Express Van (new body style) | 61040 | 61043 | 61045 | 61046 |
| GMC | 2007-2013 | Sierra Pickup, Yukon, Yukon XL, Denali, Savana Van (new body style) | 61040 | 61043 | 61045 | 61046 |
| | 2008-2013 | Savana Van (new body style) | 61040 | 61043 | 61045 | 61046 |
| Hummer | 2007-2013 | H2 (new body style) | 61040 | 61043 | 61045 | 61046 |

\$40
CASH BACK

GRANT
BUY BACK
PROGRAM



DODGE TRUCKS

| Make | Year(s) | Model(s) | Dark Slate w/Burlwood Insert | Dark Slate w/Silver Insert |
|-------|-----------|-----------------|------------------------------|----------------------------|
| Dodge | 2004-2008 | Full Size Ram | 64035 | 64036 |
| Dodge | 2004-2010 | Durango, Dakota | 64035 | 64036 |

\$40
CASH BACK

GRANT
BUY BACK
PROGRAM

THE HERITAGE COLLECTION

The Heritage Collection features larger diameter machined aluminum steering wheels. The spokes are machined 6061T6 Alcoa aluminum in a range of designs, polished to a mirror finish. The rims are genuine leather, hand rubbed mahogany wood or smooth urethane with a flame pattern. The wheels have finger grips on the back of the rim for additional comfort and style. The modular construction creates a wheel rim that is covered completely with leather, mahogany or smooth urethane, not with a partial aluminum rim as used in many billet wheels. The center of each wheel has a polished aluminum center cap which compliments the wheel design.



15201 Heritage Model in Vehicle

The Heritage Collection

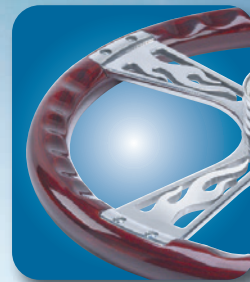


15861 Heritage Two Tone Model
Black Leather

- Modular construction allows grip customization
- Two, three and four spoke models
- 14 3/4" diameter
- 2 1/2" dish



Leather Finger Grip



Mahogany Finger Grip



15871 Heritage Deluxe Model
Black Leather



15872 Heritage Deluxe Model
Mahogany Wood



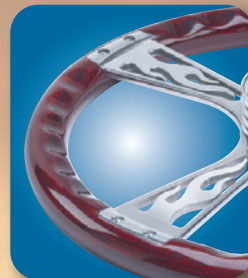
15252 Heritage Banjo Model
Mahogany Wood



15802 Heritage Model in Vehicle



Leather Finger Grip



Mahogany Finger Grip

- **Modular construction**
Allows Grip Customization
- **14 3/4" Diameter**
- **2 1/2" Dish**



15201 Heritage Mag 3 Model
Black Leather



15212 Heritage Sprint 3 Model
Mahogany Wood



15211 Heritage Sprint 3 Model
Black Leather



15802 Heritage Flame Wheel Model
Mahogany Wood



15801 Heritage Flame Wheel Model
Black Leather

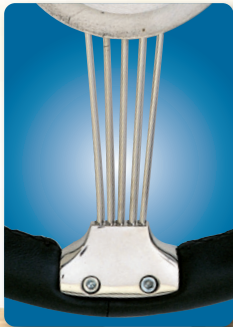
Banjo Style is an updated version of the classic "Banjo" steering wheel. Banjo Style features stainless steel construction with a highly polished center hub. The spokes are five polished stainless steel wires anchored to the wheel rim with a sculptured stainless steel spoke retainer (A).

The rims are available in rich, soft, hand-stitched leather or hand-rubbed mahogany wood with a deep, rich luster.

Banjo Style wheels are designed to be the finishing touch for any street rod vintage car or truck. Banjo Style wheels can also add a touch of timeless classic elegance to any model car or sport truck.



1057 Banjo Style shown in car



Close-up view of rim design.
BACK



Close-up view of rim design.
FRONT

These close up views are representative of part numbers 1050, 1051, and 1057. Like the Heritage Series these specific models feature modular spokes that allow enthusiasts the ability to remove and customize their grips by recovering the leather to match the interior. The mahogany wood rim can be painted to match a custom color paint scheme.



1050 Banjo Style
Black Leather Grip



1051 Banjo Style
Gray Leather Grip



1057 Banjo Style
Mahogany Wood Grip



1042 Banjo Style
Polished Stainless Steel Grip
14 3/4" diameter, 3" dish including styling sleeve.



1057 Mahogany Banjo Style Installed



1057 Mahogany Banjo Style shown with 5702 Banjo Style Kit

| PART NO. | APPLICATION (BANJO STYLE ONLY) |
|----------|---|
| 5701 | GM Cars and Trucks – same coverage as: 3162 |
| 5702 | GM Cars and Trucks – same coverage as: 3196 |
| 5705 | GM Vans – same coverage as: 4197 & 4198 |

Banjo Style Installation Kits

The Banjo Style Wheels can be installed using any of Grant's standard installation kits or billet style kits. The Banjo Style installation kits feature chrome CRS steel with a streamlined modern design that is a perfect complement to the Banjo Style Wheels.

Refer to application chart on page 34 for exact coverage.

Banjo Style Horn Buttons

These highly polished aluminum horn buttons are designed as a dress-up accessory on Grant Banjo Style steering wheels. (Will only fit Banjo Style models.)

- 5861** Polished billet Banjo Style horn button with oval Grant logo.
- 5863** Polished billet Banjo Style with Grant horn button.
- 5864** Polished billet Banjo Style plain no logo horn button.
- 5865** Polished billet Banjo Style horn button with Ford logo.
- 5867** Polished billet Banjo Style horn button with V-8 logo.



The Collector's Edition

Machined aluminum, polished to a mirror finish, is the ultimate look for any street rod or street truck. Grant offers top-of-the-line series of steering wheels and accessories...designed for the ultimate car or truck enthusiast...THE COLLECTOR.

Collector's Edition Wheels

The four-spoke wheels feature Grant's exclusive, three-dimensional, dual-plane spoke design. The spokes are highly polished aluminum. The grips have hand-stitched genuine leather covers or beautiful hand-rubbed mahogany wood with a deep, rich luster. Each wheel has a machined billet trim ring and a matte black rubber styling sleeve.

- Genuine Leather Grip
- Polished Aluminum Spokes
- 14" diameter
- 3 3/4" dish with styling sleeve



1151 Collector's Edition
shown with optional billet style kit



1150 Collector's Edition
Black Leather



1151 Collector's Edition
Medium Gray Leather



1139 Collector's Edition
Black Leather



1160 Collector's Edition shown
Black Leather
13.75" Diameter



1130 Collector's Edition
Black Leather



1131 Collector's Edition
Medium Gray Leather



1170 Collector's Edition shown in car

The enduring beauty of handcrafted mahogany wood makes an elegant steering wheel that will add style and elegance to any vehicle interior.

Mahogany Collector's Edition

These wheels feature the same high end features as our other Collector's Edition Wheels but with beautiful, elegant hand-rubbed mahogany wood grips with a deep, rich luster. The perfect finishing touch for the Collector.

- **Genuine Mahogany Wood Grip**
- **Polished Aluminum Spokes**
- **Dish Measure Includes Styling Sleeve**
- **Several Diameter Sizes**



1171 Collector's Edition
12 1/2" diameter, 3 1/2" dish



1175 Collector's Edition
14 1/2" diameter, 3" dish



1178 Collector's Edition
High Gloss Black Finish
14 1/2" diameter, 3" dish



1170 Collector's Edition
14 1/2" diameter, 3 1/2" dish



1177 Collector's Edition
14 3/4" diameter, 3 3/4" dish



1175 Collector's Edition shown in car

Eleganté Wheels

The Eleganté Models combine the elegant look of dark hand-rubbed mahogany spoke cover and finger grip with the beauty of aluminum spokes polished to a brilliant mirror finish.



732 Eleganté Model
14" diameter, 3" dish

GT Wheels

The Mahogany GT Wheels feature the elegance of hand-rubbed mahogany grip with aluminum spokes. The wheels feature a sporty look with three or four spokes.

- **Genuine mahogany finger grip**
- **Silver anodized aluminum spokes**
- **14" diameter**
- **3" dish with styling sleeve**



704 Formula GT Model
Polished Spokes



714 Formula GT Model
Satin Silver Spokes



724 Touring GT Model
Satin Silver Spokes

F/X Wheels

The F/X wheels have the rich look of hand-finished wood. The beautiful high gloss rim is actually high-density polyurethane. The wheels feature aluminum spokes in two designs available in polished mirror finish or silver satin.

- **High Gloss Wood Design Grip**
- **Aluminum spokes**
- **3 3/4" dish**



377 GT Sport Model
Polished Spokes
13 1/2" diameter



737 F/X Model
13 1/2" diameter



742 Elite GT Model in car

Elite GT Wheels

The Elite GT steering wheels feature highly polished mirror finish aluminum spokes. The wheels are highlighted by a machined billet aluminum trim ring. These models feature a hand-stitched leather-grained vinyl grip and a matte black rubber styling sleeve.

- Hand-stitched leather grained vinyl grip
- Polished aluminum spokes with trim ring
- 14" diameter
- 3 3/4" dish including styling sleeve



739 Elite GT Model



742 Elite GT Model



1065 Elite GT Model

Le Mans Wheels

The Le Mans Steering Wheels feature a timeless European design that will add style and elegance to any vehicle. The spokes feature a slot design with highly polished aluminum finish. Stainless steel button head hardware adds a performance look to the large center ring. The grip is hand stitched leather grained vinyl or hand polished mahogany. The wheels include a highly polished mirror finish horn button with the Grant "Signature" logo and matte black rubber styling sleeve.



1070 Le Mans Model



1071 Le Mans Model
Mahogany Wood Rim



1072 Le Mans Model



1074 Le Mans Model

Corsa GT Wheels

The Corsa Collection is the Italian design inspired by the world famous European road races. Corsa is the Italian word for race and the Corsa wheels will make every driver feel like a race car driver. The Corsa Collection Wheels feature two types of beautiful hand-stitched leather crafted into a new combination of sportiness and elegance. The wheels feature perforated leather in the hand grip driving position for maximum comfort. The grained leather top and bottom rim adds a contrasting elegance. The highly ergonomic design features make these wheels a pleasure to hold in any driving position. The Corsa wheels feature anodized aluminum spokes.

- Perforated and solid leather grip
- 13 3/4" diameter
- 3 3/4" dish with styling sleeve



1020 Corsa GT Model in car



1020 Corsa GT Model
Black Leather



1030 Corsa Model
Black leather 13 3/4" x 12 3/4" diameter

Fibertech Models

These Fibertech Wheels feature high density polyurethane grips with a high gloss finish and are accented with a textured carbon fiber design material. The spokes are polished aluminum or black anodized aluminum. Models are available with a high gloss finish in a selection of vibrant candy colors found in today's hottest applications.

- Aluminum spokes
- 13 1/2" diameter.
- 3 1/2" dish, with styling sleeve



1123 Fibertech Model
Silver/Black

1460 Fibertech Model
Red/Black Polished

1461 Fibertech Model
Blue/Black Polished

1462 Fibertech Model
Purple/Black Polished

Club Sport Wheels

The Club Sport Wheels have highly styled ergonomic grips with hand-stitched vinyl covers. A combination of colors, textures and models with center pads give these wheels a very attractive high performance look. Black leather-look vinyl and diamond grip textured vinyl are combined to create cutting edge designs. The wheels have aluminum spokes. 13½" diameter, 3½" dish with styling sleeve.

- Hand-stitched Vinyl Grips
- Aluminum Spokes
- 13 ½" Diameter
- 3 ½" Dish with Styling Sleeve



452 Club Sport Model

Smooth black grip, diamond grip accents, polished aluminum spokes, trim ring and accents on wheel rim.

457 Club Sport Model.

The wheel rims are molded self skin polyurethane with a textured leather grain finish and polished accents. The spokes are polished aluminum. The wheels have polished trim rings.

Note: 4009 Adapter Ring is necessary to install on all Billet & Euro Kits. As well as **2001 Security System**. See page 32. This wheel will not work with Billet Style Horn Buttons.



457 Club Sport Model



1066 Formula 1 Model
Gray Accent

1067 Formula 1 Model
Red Accent



1068 Formula 1 Model
Yellow Accent

1069 Formula 1 Model
White Accent

The Formula 1 Models are designed to capture the feel and the spirit of world-class racing.

Formula 1 Wheels

Made famous on race courses throughout the world and now brought to the street by Grant. The Formula 1 Models are designed to capture the feel and the spirit of world-class racing. The wheels feature full ergonomic grip contoured to the shape of the hand for added comfort, control and driving pleasure.

The ergonomic grip is hand-stitched leather-grained vinyl. The spokes are anodized aluminum alloy. The wheels include black matte rubber styling sleeve.

- Black Perforated Hand Grip
- Accents Colors Hand Grip
- 13 ¾" Diameter
- 3 ½" Dish with Styling Sleeve

Classic 5 wheels

The Classic 5 Wheels are designed to capture the spirit of the early years of car racing and the birth of the original Hot Rods. The three spokes are chromed steel or black powder coat with a matching trim ring and a Grant horn button. The wheels feature grips with black cushion foam, high gloss white vinyl, hand-stitched leather-grained vinyl, or genuine hardwood with rivets. These large diameter wheels are also ideal for trucks and Jeeps.

Note: *Classic 5 Wheels feature Grant's 5-bolt pattern that will fit on Billet Installation Kits, Euro Kits, Signature Series Billet Style Horn Buttons, and Signature Series Horn Buttons.*

See Pages 29-30.



992 Classic 5 Model
15 1/2" diameter



990 Classic 5 Model

- **Equally Spaced 3-Spoke Design**
- **Chrome and Black Steel Spokes**
- **Matching Trim Ring**
- **Aluminum Styling Sleeve**
- **14 1/2" Diameter, 2 3/4" Dish**



993 Classic 5 Model
Black Cushion Grip



1076 Classic 5 Model
Black Leather-Grained Vinyl Grip



991 Classic 5 Model
White Gloss Vinyl Grip



701 GT Sport Model
Chrome Spokes



702 GT Sport Model
Matte Black Spokes

GT Sport Wheels

These 3-spoke wheels feature European styling with a thick textured foam grip. The spokes are CRS steel with matte black or brilliant chrome finish. The wheels have matte black rubber styling sleeves.

Note: GT Sport Wheels feature Grant's 5-bolt pattern that will fit on Billet Installation Kits, Euro Kits, Signature Series Billet Style Horn Buttons, and Signature Series Horn Buttons.

- **Black Foam Cushion Grip**
- **CRS Steel Spokes**
- **13" Diameter**
- **3 1/2" Dish with Styling Sleeve**



701 GT Sport Model in car



773 Formula GT Model shown with standard installation kit

Formula GT Wheels

The Formula GT Wheels feature hand-stitched leather-grained vinyl grips and matte black rubber styling sleeves. The Formula GT is a 3-spoke design with machined racing holes. The spokes are available in polished, silver satin or black anodized aluminum alloy.

- **Black Leather-Grained Vinyl Grip**
- **Hand-stitched Grip**
- **Anodized Aluminum Spokes**



763 Formula GT Model
Silver Spokes, 13" Diameter, 3" Dish
762 (Same Style)
Silver Spokes, 12" Diameter, 3" Dish



771 Formula GT Model
Polished Spokes, 13" Diameter, 3" Dish



773 Formula GT Model
Black Spokes, 13" Diameter, 3" Dish
772 Formula GT Model
Silver Spokes, 12" Diameter, 3" Dish



764 (Same Style)
Silver Spokes, 14" Diameter, 3 1/2" Dish
1760 Formula GT Model
Silver Spokes, 15" Diameter, 3" Dish



789 Formula GT Model
Polished Spokes, 14" Diameter, 3 1/2" Dish
1750 (Same Style)
Silver Spokes, 15" Diameter, 3" Dish



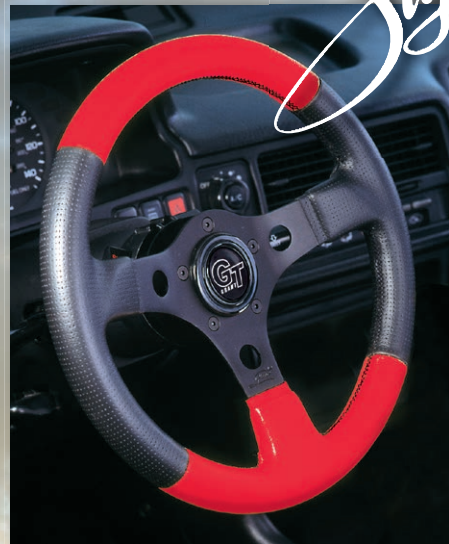
774 (Same Style)
Silver Spokes, 14" Diameter, 3 1/2" Dish
1770 Formula GT Model
Black Spokes, 15" Diameter, 3 1/2" Dish

The Formula GT Wheels feature hand-stitched leather-grained vinyl grips.

Formula GT Wheels

The Formula GT Wheel tradition continues with these sporty two tone combination versions. They feature vibrant colored hand-stitched leather-grained vinyl and black perforated grips.

- Color Leather-grained Vinyl Grips
- Hand-stitched Grips
- Black Anodized Aluminum Spokes
- 13" Diameter
- 3" Dish with styling sleeve



1146 Formula GT



1145 Formula GT Model
Black Perforated Grip with
Gray Accent



1146 Formula GT Model
Black Perforated Grip with
Red Accent



Close up of
Perforated
Grip

1075 Pro Stock Model

The grip is a combination of diamond textured and smooth vinyl with a yellow top marker. Black anodized spokes. 13" Diameter, 3" Dish with styling sleeve.



Diamond Grip

This grip is a combination of diamond textured and smooth grip. The diamond grip creates the ultimate feel for a "Posi-Grip" driving experience.



Close up of
Diamond Grip



GT Rally Wheels

Patterned after the most popular rally car look. Available in solid 3 or 4-spoke designs. Molded cushion grip contoured to the shape of the hand with a leather-grained finish. The wheels have anodized aluminum alloy spokes and matte black rubber styling sleeves.

- **Molded Black Cushion Grip**
- **Grip has Leather-grained Finish**
- **Anodized Aluminum Spokes**
- **Silver or Black Finish**



748 GT Rally Model
Silver Anodized Spokes,
14" Diameter, 3 3/4" Dish



761 GT Rally Model
Black Anodized Spokes,
13" Diameter, 3" Dish



1108 GT Rally Model
Polished Aluminum Spokes
14" Diameter, 3 3/4" Dish



760 GT Rally Model
Silver Anodized Spokes,
13" Diameter, 3" Dish



749 GT Rally Model
Black Anodized Spokes,
14" Diameter, 3 3/4" Dish



1103 GT Rally Model
Polished Aluminum Spokes
13" Diameter, 3" Dish

Racing & Performance Wheels

- Lightweight Aluminum Wheel with the strength to withstand wear and tear of the aggressive driver
- Center Cap or Horn Button
- 3 Spoke Design

NEW



691 Performance & Race

- Black Carbon Fiber Look Material
- 13.75" - 1.5" Inch Dish

NEW



689 Performance & Race

- Contoured Polyurethane Grip
- 13.75" X 11.75" - 1.5" Inch Dish

NEW



490 Performance & Race

- Wrapped Suede Vertical Spoke
- Contoured Polyurethane Grip
- 13.75" X 11.75" - 1.5" Inch Dish

Close up of Diamond Grip



NEW



694 Performance & Race

- Premium Ultra Suede Material
- Grey Top Marker/Racing Strip
- 13.75" Diameter - 3.5" Inch Dish

NEW



692 Performance & Race

- Premium Leather Material with Red Top Marker/Racing Strip
- 13.75" Diameter - 3.5" Inch Dish

NEW



690 Performance & Race

- Diamond Texture Material
- Red Top Marker/Racing Strip
- 13.75" Diameter - 3.5" Inch Dish

Aluminum Wheels

The Performance Series Aluminum Wheels feature 3-spoke unidirectional designs. The wheels all have rims and spokes constructed of 6061T6 aluminum for lightweight and higher strength. The wheels are available with a smooth rim or with finger grips and have an extra thick textured foam cushion grip for comfort. All wheels have Grant's standard three-hole mounting pattern. Aluminum wheels are not shipped with horn button.



- Aluminum Models in 13", 15", and 16½" Diameters
- Cushion Foam Grip

| Wheel Diameter | 1½" DISH | 3⅛" DISH |
|------------------------------|----------|----------|
| 13" Wheel | 650 | — |
| 13" Wheel with Finger Grips | 660 | — |
| 15" Wheel | 654 | 655 |
| 15" Wheel with Finger Grips | 664 | 655 |
| 16½" Wheel | 656 | 657 |
| 16½" Wheel with Finger Grips | 666 | 657 |

Performance Series Steel Wheels

The Performance Series Steel Wheels feature all steel construction with a powder coat finish. A cushion foam grip is featured on most models.

- Cushion Foam Grip
- Powder Coat Finish
- All Steel Construction



850
10 ¼" Diameter, 2 ½" Dish

332
14 ¾" Diameter, 4" Dish

677
16" Diameter, 3 ⅛" Dish
675
15" Diameter, 3 ⅛" Dish

Performance GT Wheels

The Performance GT Wheels are designed for race cars. The wheels feature two holes to ease the installation of aftermarket switch buttons for racing. The wheels have hand stitched black vinyl grip and anodized aluminum spokes.

- Two Holes for Switch Buttons
- Hand Stitched Vinyl Grip
- Anodized Aluminum Spokes
- 13" Diameter
- Holes Will House Switches That Are Sized at 1 1/16"
- Wheel #673 is Pictured with TCI Switches
- Wheels are Pictured with Quick Disconnect Kit (sold separately)
- Wheels Do Not Come with Horn Button or Part #4000 (styling sleeve)



630

D-Shape Diamond Grip

The Grip is a combination of smooth and diamond textured vinyl with a yellow top marker. Black Anodized Spokes. 13 3/4" x 12 1/2", Flat Dish



633

The grip is a combination of smooth and diamond textured vinyl with a yellow top marker. Silver anodized spokes.



663

Silver Anodized Spokes



673

Black Anodized Spokes. (Shown with TCI switch buttons which are not included)

Suede Wheels

These wheels have rims covered with black suede leather and anodized aluminum spokes.

- Anodized Aluminum Spokes
- Black Suede Leather Grip



631

Black Anodized Spokes
11" Diameter, Flat Dish



670

Black Anodized Spokes
13 3/4" x 12 1/2", Flat Dish



687

Silver Anodized Spokes
11 3/4" Diameter, 1 1/8" Dish.



613-4

Black Anodized Spokes
10" x 9" Diameter, Flat Dish
NOT FOR STREET USE



713-4

Silver Anodized Spokes
10" x 9" Diameter, Flat Dish
NOT FOR STREET USE



187 Kart Model

Molded Polyurethane Grip
Black Steel Spokes.
11 3/4" Diameter, 1 1/8" Dish.



414 Challenger Model
shown Installed

The Challenger Series

These wheels feature Grant's exclusive dual-plane spoke design. This 3-dimensional hi-tech, dual-plane 4-spoke design offers a "world-class look." The wheels have an extra thick textured foam cushion grip. The spokes are CRS steel in matte black, satin silver or brilliant chrome. The wood wheels feature genuine hardwood walnut finish rims, rivets and black finger grips.

- **Exclusive Dual-plane Spoke Design**
- **Black Foam Cushion Grip**
- **13 1/2" Diameter**
- **3" Dish**



414 Challenger Model
Matte Black Spokes



415 Challenger Model
Silver Satin Spokes



440 Challenger Model
Chrome Spokes

Three Spoke Models

- **Black Foam Cushion Grip**
- **Black Foam Trim Ring**
- **13 3/4" Diameter**
- **2 1/4" Dish**



860 Challenger Model
Silver Satin Spokes



870 Challenger Model
Matte Black Spokes

Wood Models

- **Hardwood Grip with Rivets**
- **Exclusive Dual-Plane Spoke Design**
- **13 1/2" Diameter**
- **2 1/4" Dish**



404 Challenger Model
Matte Black Spokes



405 Challenger Model
Silver Satin Spokes

The Classic Series

The Classic Series offers the most complete assortment of sizes and finishes featuring a timeless high performance look. The wheels are available with thick foam grips, genuine hardwood, vinyl or chain grips. The spokes are stainless steel or CRS steel.

- **Black or White Gloss Vinyl Grip**
- **CRS Steel Spokes**
- **Chrome Finish**
- **Matching Horn Buttons**



Side View of 833



838-BH

13½" Diameter, 3½" Dish
Billet Style Polished Sleeve
Grant Horn Button



838 13½" Diameter, 3½" Dish
836 12½" Diameter, 3½" Dish
834 11½" Diameter, 3¾" Dish
831 13½" Diameter, 2" Shallow Dish



832 14¾" Diameter, 3½" Dish
830 13½" Diameter, 3½" Dish



833 10" Diameter, 5½" Dish



829 8½" Diameter, 4½" Dish



338 13¾" Diameter, 3½" Dish
334 11½" Diameter, 3¾" Dish



434 11¾" Diameter, 3¾" Dish



857 12½" Diameter, 4" Dish



470 13½" Diameter,
1¾" Shallow Dish

CLASSIC SERIES

Classic Series



740 Classic Model shown with 2001 Security System

Classic Chain Wheels

The Classic Chain Wheels feature a welded chain grip in three and four spoke designs. These wheels provide a unique individual look for any show car or cruiser. The Classic Chain Wheels are available in brilliant chrome.

- **Classic Chain Grip**
- **Chrome Plated Finish**
- **4-Spoke Models: 11" Diameter, 3 1/2" Dish**
- **3-Spoke Models: 10" Diameter, 5 1/2" Dish**



741 Classic Model
10" Chrome Finish



740 Classic Model
11" Chrome Finish

Classic Cruisin' Wheels

The Classic Cruisin' wheels are for show or go. These high gloss vinyl grip wheels were some of Grant's most popular wheels during the '60's. The gloss vinyl steering wheels were extremely popular on dune buggies and hot rods of that era.

- **Black or White Gloss Vinyl Grip**
- **CRS Steel Spokes**
- **Chrome Finish**



502 13 1/2" Diameter, 3 1/2" Dish
802 12 1/2" Diameter, 3" Dish



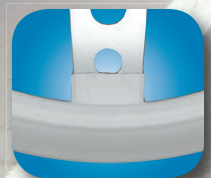
570 13 1/2" Diameter
1 3/4" Shallow Dish



571 13 1/2" Diameter
1 3/4" Shallow Dish



Close-up view of black gloss grip.

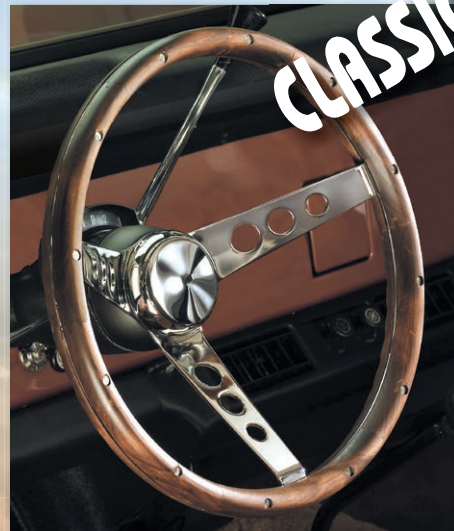


Close-up view of white gloss grip.

Classic Wood Wheels

The Classic Wood Wheels feature hand-polished hardwood, walnut finish and anodized aluminum rivet construction for a sportier look. The 3-spoke wheels feature CRS steel in matte black or brilliant chrome.

- **Genuine Hardwood Grip with Walnut Finish**
- **Anodized Aluminum Rivets for Style**
- **CRS Steel Spokes**
- **Chrome and Black Finish**



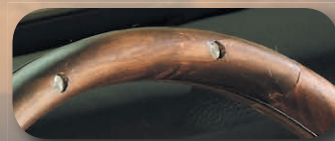
213 Classic Model in car



213 13 1/2" Diameter, 3 3/4" Dish
201 15" Diameter, 4 1/8" Dish



313 13 1/2" Diameter, 3 3/4" Dish



Close-up view of rim design

Classic Nostalgia Wheels

The Nostalgia Wheels are designs patterned after some of the most popular classic designs of the '60's muscle car era. The wheels feature genuine hardwood or thick foam cushion grips that will add style and comfort to any vehicle.

- **Brushed Stainless Steel Spokes**
- **Chrome Horn Button**
- **Hardwood or Foam Grip**



963-0 Hardwood Rim
 13 1/2" Diameter, 3 3/4" Dish
966-0 Hardwood Rim
 15" Diameter, 4 1/8" Dish



968-0 Foam Grip
 15" Diameter, 4 1/8" Dish



967-0 Hardwood Rim
 15" Diameter, 4 1/8" Dish



969-0 Foam Grip
 15" Diameter, 4 1/8" Dish

Ford Licensed Horn Buttons

Ford Official Licensed horn buttons are now available to fit Grant steering wheels, featuring the Ford, Ford Mustang, Mercury and Lincoln emblems. All of these horn buttons are manufactured by Grant Products under licensed by the Ford Motor Company.



966 shown in car



968 shown in car

5847 Mustang Horn Button

This cast high rise horn button features a beautiful detailed Mustang emblem. Designed to fit Grant Classic Series wheels only. **See page 30 for other Ford Licensed Horn Buttons.**



Ford Licensed Horn Buttons

- 963** Includes one 963-0 Classic Nostalgia Wheel 13½" Diameter, ¾" Dish and one 5847 Mustang Horn Button
- 966** Includes one 966-0 Classic Nostalgia Wheel 15" Diameter, ⅞" Dish and one 5847 Mustang Horn Button
- 968** Includes one 968-0 Classic Nostalgia Wheel 15" Diameter, ⅞" Dish and one 5847 Mustang Horn Button

GM Licensed Products

Grant Products now offers a wide range of horn buttons featuring the emblems of some of the world's most popular cars and trucks. All of these products are manufactured by Grant and are officially licensed by General Motors.



Only for use on pre-1990 GM vehicles. For street rod use only.

- **Wheels listed below are 15" Diameter, ⅞" Dish**



967 Classic Nostalgia Wheel



969 Classic Nostalgia Wheel

- 967** Includes one 967-0 Classic Nostalgia Wheel and one Chevrolet Brushed Stainless Steel Horn Button
 - 969** Includes one 969-0 Classic Nostalgia Wheel and one Chevrolet Horn Button
 - 987** Includes one 967-0 Classic Nostalgia Wheel and one Pontiac Horn Button
 - 989** Includes one 969-0 Classic Nostalgia Wheel and one Pontiac Horn Button
- See page 30 for other GM Licensed**



987 Classic Nostalgia Wheel



989 Classic Nostalgia Wheel

Classic GM Wheels

These wheels feature the classic design that was a popular option wheel of the GM muscle cars of the '60's. The original wheels were plastic with a faux wood pattern in two finishes. The Grant wheels are genuine wood and replicate the original finishes (dark mahogany and light walnut) as well as an added glossy black model and all feature brushed stainless steel spokes. The 6-bolt pattern wheels are a direct bolt-on replacement for the original wheel and utilize the original horn button components. They are available in the original 16" diameter with 4" dish (in dark mahogany only) and 14½" diameter with a 3" dish (in all three finishes) for additional driving comfort and space. The 3-bolt pattern wheels can be used on any vehicle with our standard (3000/4000) series installation kits. They feature the same wood finishes with brushed stainless steel spokes and have a brushed stainless steel horn button as well.

16" Diameter, 4" Dish

14½" Diameter, 3" Dish

14½" Diameter, 3" Dish

14½" Diameter, 3" Dish



926 Classic GM Model
6-Bolt Version
Gloss Dark Mahogany Finish
971 3-Bolt Version

973 Classic GM Model
3-Bolt Version
Gloss Dark Mahogany Finish
929 6-Bolt Version

930 Classic GM Model
6-Bolt Version
Gloss Light Walnut Finish
974 3-Bolt Version

976 Classic GM Model
3-Bolt Version
High Gloss Black Finish
928 6-Bolt Version

1963 to 1975 and 1977 to 1982 (Does not fit 1976 Corvette)

1963-1967 Models can also use Classic GM Wheels as shown at top of page.

1963 to 1975 & 1977 to 1982

- 1967-75 Direct Bolt-On (All)
- 1977-82 With Tilt/Telescopic Column Above years use wheels #791, #794, or #795. For models with standard column see installation application chart.

1976

No Coverage

1984-1989

Use a Signature Series Wheel and Installation Kit #6400.

Part Numbers 791, 794, 795

14" Diameter

Flat Dish



791 Corvette Model
Black Leather

794 Corvette Model
Mahogany

795 Corvette Model
Mahogany Rim w/ black spokes



246 Classic Nostalgia Model in car

Classic Nostalgia Wheels

These new wheels feature spokes that are patterned after the classic Mopar Tuff Wheel design from the 60's muscle car era. The steering wheels are available with hardwood walnut finish grips or thick cushion foam grips. The spokes are CRS steel with a matte nickel plate finish. The retro style horn button completes the look of this muscle car classic.

Close-up of bolt pattern



Dual Bolt Pattern

The wheels have the Grant standard three-hole bolt pattern so they can be installed on a wide variety of vehicles using a Grant Installation Kit.

The wheels also have the original Mopar Tuff Wheel bolt pattern and can be installed as a replacement wheel using the original hardware on the original column.



846 Classic Nostalgia Model

Foam Grip
 15" Diameter, 2½" Dish
 5699 Button Included



NEW DESIGN

246 Classic Nostalgia Model

Hardwood Grip
 15" Diameter, 1¾" Dish
 5699 Button Included



1004 Classic Nostalgia Model

Black Leather, Baseball Stitch 14½" Diameter, 1½" Dish, Genuine black leather grip utilizing the baseball type stitch used on 1974 and later versions of the original wheel. We chose this stitch as it has a much cleaner look and is more desirable than the earlier faux stitch used on the original molded Tuff Wheels
 5699 Button Included

5699 Classic Nostalgia Button

This nostalgia design horn button is designed as a replacement part for the original Mopar Tuff wheel. Not designed for use on Grant Wheels except these Classic Nostalgia Models.



Horn Buttons

Grant has a wide range of horn buttons that will personalize and add style to our custom steering wheels. Our selection includes Official Licensed Product from Ford Motor Company, General Motors and Chrysler.

Signature Horn Buttons

These buttons can be used on Signature Series and Classic 5 wheels with a 5-bolt mounting pattern.



Classic & Challenger Horn Buttons

These buttons will replace all metal buttons on Classic (except Classic 5) and Challenger series wheels. The 5646 is the billet housing only, you can add any of the Signature Series buttons to the housing to create a custom look for any Classic/Challenger Wheels.



Chrysler Licensed Products

The 860 Wheel is shown with our New Black Mopar and Chrysler Pentastar Horn Buttons.



To Fit Classic and Challenger Wheels

To Fit Signature Wheels



| | FOR CLASSIC OR CHALLENGER WHEELS | | FOR SIGNATURE WHEELS | |
|---------------------|----------------------------------|---------------|----------------------|--------------|
| | MATTE BLACK | BRIGHT CHROME | SIGNATURE | BILLET STYLE |
| MOPAR® | 5790 | 5690 | 5670 | |
| Chrysler Emblem® | | 5691 | 5671 | |
| Chrysler Pentastar® | 5793 | 5693 | 5673 | |
| Dodge Ram® | | 5692 | 5672 | |
| Plymouth® | | 5694 | 5674 | |
| Jeep® | | 5695 | 5675 | 5879 |

GM Licensed Products

Grant Products offers a wide range of horn buttons featuring the emblems of some of the world's most popular cars and trucks. All of these products are manufactured by Grant and are officially licensed by General Motors.

Only for use on pre-1990 GM vehicles. For street rod use only.

To Fit Classic and Challenger Wheels



To Fit Signature Wheels



| | FOR CLASSIC OR CHALLENGER WHEELS | | FOR SIGNATURE WHEELS | |
|---------------------------------------|----------------------------------|---------------|----------------------|--------------|
| | BRUSHED STAINLESS | BRIGHT CHROME | SIGNATURE | BILLET STYLE |
| Chevrolet® (Blue & Silver) | 5644 | 5630 | 5650 | 5876 |
| Chevrolet® (Red & Black) | | 5640 | 5660 | |
| Chevrolet® (Red/White/Blue) | 5643 | 5607 | 5657 | |
| Camaro® | | 5641 | 5661 | |
| Corvette® Flags | | 5632 | 5652 | |
| Pontiac® | | 5635 | 5655 | |
| Oldsmobile® | | 5634 | 5654 | |
| Buick® | | 5631 | 5651 | |
| Cadillac® | | 5633 | 5653 | |
| GMC Truck® | | 5636 | 5656 | |
| SS Super Sport® | | 5636 | 5649 | |

*Ford, Lincoln, Mercury, and Mustang are trademarks of the GM, Chevrolet, Corvette, Camaro, Pontiac, Oldsmobile, Buick, Cadillac and GMC are trademarks of General Motors Corporation used under license to Grant Products.

Ford Motor Company Licensed Products

Grant Products offers a wide range of horn buttons featuring the emblems from some of Ford Motor Company's cars and trucks. All of these products are manufactured by Grant and are officially licensed by Ford Motor Company.

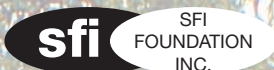


To Fit Classic and Challenger Wheels

To Fit Signature Wheels



| | FOR CLASSIC OR CHALLENGER WHEELS | | FOR SIGNATURE WHEELS | |
|------------------|----------------------------------|---------------|----------------------|--------------|
| | CAST HORN BUTTON | BRIGHT CHROME | SIGNATURE | BILLET STYLE |
| Mustang® | 5847 | 5688 | 5668 | |
| Cobra® | | 5683 | 5663 | |
| Ford® | | 5685 | 5665 | 5875 |
| Lincoln® | | 5686 | 5666 | |
| Mercury® | | 5687 | 5667 | |
| Ford V-8® | | 5682 | 5662 | 5859 |



SFI

All "Pinless" Quick Release Models meet the S.F.I. 42.1 Specification. This is a NHRA Mandatory Specification. The 3001 and 3011 Series fit Grant 3-Bolt Pattern Wheels. The 3021 Series fit Grant 5-Bolt Pattern Wheels.

Quick Release Hubs

Grant offers quick release hubs for the quick removal and remount of a Grant Performance Series steering wheel. The "Pinless" type features a positive lock system with a squeeze release slip ring mechanism to provide the maximum in safety and convenience to all race cars. The "Pin" type features a removable pin. Grant Quick Release Hubs are manufactured from aircraft quality billet aluminum. Parts are precision CNC-machined to exact standards to provide the finest quality Quick Release Hubs available. These parts are designed for off-road use only. **NOT LEGAL FOR STREET USE.**



3 Bolt

- 3001** "Pinless" For GM Splined Shaft
- 3002** For Ford Splined Shaft
- 3003** To Weld on $\frac{5}{8}$ " Shaft
- 3004** To Weld on $\frac{3}{4}$ " Shaft
- 3005** Will fit 1984 thru 2004 Mustangs, 3-bolt mounting pattern wheels
- 3010** Mazda Miata 1996 thru 2007, 3-bolt mounting pattern wheels
- 3040** Mustang 2005-on, 3-bolt mounting pattern wheels

5 Bolt

- 3021** "Pinless" For GM Splined Shaft
- 3022** For Ford Splined Shaft
- 3023** To Weld on $\frac{5}{8}$ " Shaft
- 3024** To Weld on $\frac{3}{4}$ " Shaft
- 3025** Will fit 1984 thru 2004 Mustangs, 5-bolt mounting pattern wheels
- 3030** Mazda Miata 1996 thru 2007, 5-bolt mounting pattern wheels
- 3050** Mustang 2005-on, 5-bolt mounting pattern wheels

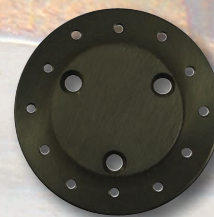


- 3011** "Pin Style " For GM Splined Shaft
- 3012** For Ford Splined Shaft
- 3013** To Weld on $\frac{5}{8}$ " Shaft



3073

To adapt Grant 5-Bolt wheels to Grant 3-bolt Racing Quick Release (adapter included on 5-bolt releases)



3075

To adapt 6-bolt Momo/Sparco and Nardi bolt pattern wheels to Grant Racing Quick Release



2001 Vehicle Security System

No Wheel, No Steal

Grant introduces the world's first security system based on removing a car's steering wheel. That's right...removing a car's steering wheel.

After years of research and development, this fully patented system has proven to be virtually foolproof and safe. It's easy to install. It's easy to use. As easy as 1-2-3. And the wheel goes on the same way it comes off.

Note: 2001 Vehicle Security System can only be installed on 3000 or 4000 series kits. Euro, Telescopic, Billet, and Banjo Kits cannot be used. Does not work with original factory steering wheels or airbag equipped vehicles. Requires a Grant Steering Wheel that has our 3 bolt or 5 bolt mounting pattern.

1966 Chevelle El Camino

Tony Stark is constantly winning show awards and appearing in magazines and videos with his distinctive El Camino. He keeps it safe by using a Grant 2001 Vehicle Security System.



2010

Nylon Carry-Along Storage Bag. A convenient way to Carry and Protect your Wheel when removed from the vehicle. (Optional Extra).



2001

Vehicle Security System

3 Easy Steps to Your Vehicles Security



1

Use the Flagged Security Key to Unlock the Steering Wheel



2

Trigger Release Knob, Turn Wheel to Left, and Remove



3

Snap on the Security Lock-Out Cap and Remove Key

Installation Kits

Grant manufactures Installation Kits to install Grant Custom Steering Wheels on a wide variety of vehicles. An Installation Kit is necessary to install a Grant Steering Wheel. Kits are not designed to be used with airbag-equipped vehicles. If your vehicle has an airbag, refer to our airbag solutions section of this catalog.

3000 - 4000 Series'

This is the standard Grant Steering Wheel Installation Kit. These kits may be used to install all Classic Series, Challenger Series or Signature Series Steering Wheels. Each kit contains complete step-by-step instructions, a die cast hub, grade 5 hardware and matte black trim pieces.



Models 3000 thru 4000 Series'
Basic installation kit components shown.
(Components vary by application).



2001 Vehicle Security System Installation Guideline

2001 Vehicle Security System can only be installed using one of the above kits. Euro, Telescopic, Billet, and Banjo Kits cannot be used.

Use Installation Kits 3000 - 4000 Series' only.

Optional Billet Style Installation Kits

Grant Billet Style Installation Kits are an optional styling upgrade. The Billet Style Kits have Grant's five-hole mounting pattern and can only be used to install Grant Signature Series Steering Wheels.



5196 Black Luster



5196-1 Polished Aluminum

| Black Luster Kit | Polished Kit | Application |
|------------------|--------------|---|
| 5162 | 5162-1 | GM Cars & Trucks - Same Coverage as: 3162 |
| 5163 | 5163-1 | GM Trucks - Same Coverage as: 3163 |
| 5167 | 5167-1 | GM Trucks - W/O Airbag Only 1995-99 (Available Billet Style Only) |
| 5196 | 5196-1 | GM Cars & Trucks, Jeeps - Same Coverage as: 3196 |
| 5249 | 5249-1 | Ford Cars & Trucks - Same Coverage as: 3249 |
| 5275 | 5275-1 | Ford Full-Size Pick-up & Bronco - 1992-98 (Available Billet Style Only) |
| 5285 | 5285-1 | Ford Cars & Trucks - Same Coverage as: 3285 |
| 5318 | 5318-1 | 1970-74 Plymouth Barracuda, Dodge Challenger |
| 5560 | 5560-1 | Nissan Cars & Trucks - Same Coverage as: 3560 |
| 5565 | 5565-1 | Volkswagen - Same coverage as: 3565 |
| 5592 | 5592-1 | Datsun Cars & Trucks - Same coverage as: 3592 |
| 5595 | 5595-1 | Honda & Acura Cars - Same coverage as: 3595 |

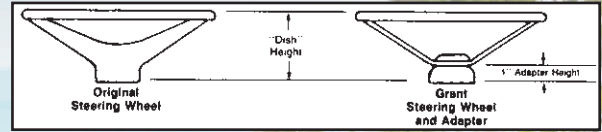


Optional Billet Kit



Standard Black Styling Sleeve

Steering Wheel Installation Kit Application Chart



IMPORTANT INFORMATION PLEASE READ

1. Grant installation kits are necessary to install Grant Custom Steering Wheels. Genuine Grant Installation Kits should be used ONLY on vehicles specified in this application chart.
 2. Installation Kits are not designed to be used on any airbag equipped vehicle.
 3. These Kits are not designed for use on vehicles with radio controls or cruise controls mounted on the steering wheel except for certain Ford vehicles with factory cruise control switches in the steering wheel.
 4. To ensure adequate finger clearance between the steering wheel rim and turn signal or other column levers, select a Grant Custom Steering Wheel that will approximate the "dish" of the original wheel. Be sure to add 1" adapter height to the printed Grant Wheel "dish" when comparing to the original wheel. See diagram.
- **Listed by car brand**
 - **Boats and golf carts on page 37**
 - **Custom steering columns on page 37**

PLEASE READ IMPORTANT INFORMATION REGARDING ALL APPLICATIONS

- Indicates Billet Style Kit Available.

GREY Indicates EURO Style Kit will fit Signature Series Steering Wheels only.

| ACURA | | | |
|---|---|----------------|------|
| 1986-93 | Integra | • | 3595 |
| 1986-89 | Legend | • | 3595 |
| AMERICAN MOTORS (ALSO SEE JEEP, EAGLE LISTINGS) | | | |
| 1970-88 | All Models (except Alliance, Encore) | • | 3196 |
| 1967-69 | Javelin, AMX | | 4193 |
| 1969 | Ambassador, American, Rebel | | 4193 |
| 1967-68 | Ambassador, American, Rebel | • | 3162 |
| BMW | | | |
| 1983-89 | 3 Series (except 320i - see below) | EURO Style Kit | 6524 |
| Thru 82 | 3 Series (320i all years) | EURO Style Kit | 6522 |
| 1986-89 | 5 Series | EURO Style Kit | 6524 |
| 1982-85 | 5 Series | EURO Style Kit | 6523 |
| Thru 81 | 5 Series- See below* | EURO Style Kit | 6522 |
| 1987-89 | 6 & 7 Series | EURO Style Kit | 6524 |
| 1983-86 | 6 Series | EURO Style Kit | 6523 |
| Thru 82 | 6 Series | EURO Style Kit | 6521 |
| Thru 86 | 7 Series | EURO Style Kit | 6521 |
| ALL | 2800, Bavaria | EURO Style Kit | 6522 |
| ALL | 1600, 1602, 2000, 2002, 528i*, 530i* | EURO Style Kit | 6521 |
| BUICK | | | |
| 1969-93 | All Models (except telescopic) | • | 3196 |
| 1964-66 | All Models | • | 3162 |
| 1967-68 | All Models | | 4181 |
| 1961-63 | Special, Skylark | | 4161 |
| CADILLAC | | | |
| 1969-89 | All Models (except telescopic) | • | 3196 |
| CHEVROLET AUTOS (EXCEPT CORVETTE) | | | |
| 1969-94 | All Models (except Corvette, Sprint, Spectrum '86-'88 Nova) | • | 3196 |
| 1988-89 | Spectrum (no coverage '85-'87) | | 4509 |
| 1986-88 | Nova | | 3593 |
| 1985-88 | Sprint | | 4510 |
| 1968 | Camaro | | 4193 |
| 1967 | Camaro | • | 3162 |
| 1967-68 | Chevelle, El Camino | • | 3162 |
| 1966 | Chevelle, El Camino | | 4181 |
| 1964-65 | Chevelle, El Camino | | 4187 |
| 1967-69 | Corvair | • | 3162 |
| 1960-63 | Corvair | | 4161 |
| 1967-68 | Chevy II, Nova | • | 3162 |
| 1964-66 | Chevy II, Nova | | 4181 |

| CHEVROLET AUTOS (EXCEPT CORVETTE) Continued | | | |
|--|---|--|----------------|
| 1962-63 | Chevy II, Nova | • | 3162 |
| 1967-68 | Chevrolet Full Size | • | 3162 |
| 1965-66 | Chevrolet Full Size (tilt column only) | | 4193 |
| 1964-66 | Chevrolet Full Size | | 4181 |
| 1957-63 | Chevrolet Full Size | • | 3162 |
| 1955-56 | Chevrolet Full Size | | 4160 |
| 1953-54 | Chevrolet-Most Models | | 4159 |
| 1949-52 | Chevrolet-Most Models | | 4158 |
| CHEVROLET CORVETTE NOTE: A Direct bolt-on steering wheel for Corvettes with telescopic column (1963-82) is available. See Grant Catalog. | | | |
| 1968-82 | All Models (except telescopic) | | 4193 |
| 1967 | All Models | • | 3162 |
| 1956-62 | All Models | | 4159 |
| CHEVROLET/GMC TRUCKS & VANS | | | |
| 1995-99 | All Pick-Ups, W/O airbag | • | 5167 or 5167-1 |
| 1974-94 | All Pick-Ups, Suburban, Blazer, Jimmy, S-10* | | 3196 |
| 1970-73 | All Pick-Ups, Suburban, Blazer, Jimmy | • | 3163 |
| 1960-69 | All Pick-Ups, Suburban, Blazer, Jimmy | • | 3162 |
| 1948-59 | All Pick-Ups | | 4187 |
| 1968-88 | El Camino--Sprint, Caballero | • | 3196 |
| 1967-68 | El Camino-Sprint | • | 3162 |
| 1981-82 | LUV Truck | | 4508 |
| 1972-80 | LUV Truck | | 4164 |
| 1982-94 | Chevy/GMC Vans (inc. Astro, Safari, Lumina Van) | • | 3196 |
| 1976-81 | Chevy/GMC Van (Tilt col. only) | | 4198 |
| 1976-81 | Chevy/GMC Van (Std.col. Only) | | 4197 |
| 1968-69 | Chevy/GMC Van | • | 3162 |
| DOMESTIC AUTOS | | | |
| 1990-94 | Plymouth Laser | | 4391 |
| 1978-89 | Std. col. Omni, Horizon, Rampage, Daytona, Shelby Charger, Shadow, Sundance | | 4315 |
| Note: Model 4000 extension may also be required. See Grant catalog. | | | |
| above) | 1988-89 | Std. col. All Models (excluding above) | 4320 |
| 1970-87 | Std. col. All Models (excluding above) | • | 3314 |
| 1982-89 | Tilt col. All Models | | 4324 |
| 1978-81 | Tilt col. All Models | • | 3196 |

PLEASE READ IMPORTANT INFORMATION REGARDING ALL APPLICATIONS

• Indicates Billet Style Kit Available.

GREY Indicates EURO Style Kit will fit Signature Series Steering Wheels only.

| CHRYSLER CORP. DODGE/CHRYSLER/PLYMOUTH Continued | | |
|--|---|------|
| 1968-69 | Coronet, Dart, Roadrunner, Charger, Valiant, Fury, Barracuda | 4313 |
| 1967 | Most Models | 4312 |
| 1961-66 | Most Models | 4310 |
| CHRYSLER CORP. | | |
| IMPORT AUTOS | | |
| 1985-94 | Dodge Colt/ Vista Wagon/ Conquest | 3390 |
| 1976-84 | Plymouth Arrow, Champ | 4389 |
| 1978-84 | Dodge/ Plymouth-Challenger, Sapporo | 4389 |
| 1971-84 | Dodge Colt/ Vista Wagon | 4389 |
| CHRYSLER CORP./ DODGE / PLYMOUTH TRUCKS AND VANS | | |
| 1988-92 | Std. col. 2WD & 4WD Pick-up, Trailduster, Ramcharger, Dakota, Van, Caravan, Voyager (except: '92-on Dakota) | 4320 |
| 1970-87 | Std. col. Dodge/Plymouth 2WD Pick-up, Dakota • | 3314 |
| 1974-87 | Std. col. Dodge/Plymouth 4WD Pick-up, Trailduster, Ramcharger, Dakota | 4316 |
| 1992 | Tilt col. 2WD & 4WD Pick-up, Ramcharger (except: '92-on Dakota) | 4320 |
| 1982-91 | Tilt col. 2WD & 4WD Pick-up, Trailduster, Ramcharger, Dakota, Van, Caravan, Voyager | 4324 |
| 1979-81 | Tilt col. 2WD & 4WD Pick-up, Trailduster, Ramcharger, Van • | 3196 |
| 1978-87 | Std. col. Vans (including Caravan, Voyager) • | 3314 |
| 1965-77 | Vans (All) | 4315 |
| 1985-on | Dodge D50 Pick-up, Raider | 3390 |
| 1979-84 | Dodge D50 Pick-up | 4389 |
| DAIHATSU | | |
| 1988-on | All Models | 3593 |
| EAGLE | | |
| ALSO SEE JEEP LISTINGS | | |
| 1990-94 | Talon Medallion/Premier (No coverage) | 4391 |
| FORD/LINCOLN/MERCURY AUTOS | | |
| NOTE: Vehicles with factory cruise control, see FORD CRUISE CONTROL KITS in Grant Catalog. | | |
| 1991-93 | Ford Escort | EURO |
| Style Kit | 6532 | |
| 1988-92 | Probe, Festiva | 3597 |
| 1988-90 | Tracer | 3597 |
| 1989-91 | All Other Models, except above | 3289 |
| No Coverage for: Taurus/Sable 1987-on T-Bird/Cougar 1989-on | | |
| 1984-88 | All Models (exc. Probe, Festiva/Tracer) | 3289 |
| 1983 | All Models | 4290 |
| 1978-82 | All Models (with horn on turn signal lever) Fiesta (No coverage) | 4282 |
| 1978-80 | All Models (with horn on steering wheel): Fiesta (No coverage) • | 3249 |
| 1970-77 | All Models (Capri, Pantera, No coverage) • | 3249 |
| 1965-69 | Ford Fairlane, Mustang | 3294 |
| 1965-70 | Falcon, Comet, Ranchero | 3294 |
| 1965-69 | Mercury (ALL Models) | 3294 |
| 1967-69 | Galaxie, LTD | 3294 |
| 1965-66 | Galaxie | 4287 |
| 1964-69 | Thunderbird | 3294 |
| 1964-65 | Mustang (with alternator) | 3294 |
| 1963½ - 64 | Falcon, Comet, Mustang (w/gen.) • | 3285 |
| 1963½ - 64 | Galaxie, Fairlane | 4286 |
| 1961-63 | Thunderbird Only | 4286 |
| 1958-63½ | Ford- All (exc. T-Bird, Falcon, Comet) | 4268 |
| 1958-63½ | Falcon, Comet | 4266 |

| FORD Continued | | |
|--|--|----------------|
| 1949-56 | Ford only - Most Models | 4267 |
| 1940-48 | Ford | 4297 |
| FORD TRUCKS & VANS Continued | | |
| NOTE: Vehicles with factory cruise control, see FORD CRUISE CONTROL KITS in Grant Catalog. | | |
| 1994-98 | F-250, F-350 only • | 5275 or 5275-1 |
| 1992-93 | Pick-up - Full size • | 5275 or 5275-1 |
| 1978-91 | Pick-up - Full-size • | 3249 |
| 1970-77 | Pick-up - Full-size • | 3285 |
| 1969 | Pick-up • | 3249 |
| 1968 | Pick-up • | 3285 |
| 1967 | Pick-up | 3294 |
| 1965-66 | Pick-up - Except Econoline • | 3285 |
| 1961-64 | Pick-up - Except Econoline | 4266 |
| 1958-60 | Pick-up | 4260 |
| 1949-57 | Pick-up • | 4257 |
| 1991-94 | Explorer | 4288 |
| 1992-93 | Bronco - Full-size • | 5275 or 5275-1 |
| 1978-91 | Bronco - Full-size • | 3249 |
| 1975-77 | Bronco • | 3285 |
| 1967-74 | Bronco | 3294 |
| 1989-94 | Ranger (Mid-size)/Bronco II, Aerostar | 4288 |
| 1985-88 | Ranger (Mid-size)/Bronco II, Aerostar | 3289 |
| 1982-84 | Ranger (Mid-size)/Bronco II | 4290 |
| 1978-91 | Van - Full-size • | 3249 |
| 1975-77 | Van - Full-size • | 3285 |
| 1970-79 | Ranchero • | 3249 |
| 1965-69 | Ranchero | 3294 |
| 1972-82 | Courier Pick-up | 4284 |
| 1989-92 | Prizm | 3584 |
| 1989-95 | Tracker | 4510 |
| HONDA | | |
| All | H1 Models thru 2003 | 4270 |
| 1990-94 | Excel, Scoupe, Elantra | 4541 |
| 1972-82 | All Models of Pick-ups & Scout | 4503 |
| 1986-90 | I-Mark, Impulse | 4509 |
| 1981-88 | Pick-up | 4508 |
| 1992-94 | Trooper II | 4509 |
| 1981-91 | Trooper II | 4508 |
| JEEP | | |
| ALSO SEE EAGLE LISTING | | |
| 1976-95 | CJ5, CJ6, CJ7, Wrangler, Cherokee, Wagoneer, Pick-up, Scrambler, Commanche • | 3196 |
| 1976-86 | Models with Optional OEM Wheel • | 3162 |
| 1974-75 | Cherokee, Wagoneer, Pick-up • | 3196 |
| 1972-73 | Commando, Wagoneer, Pick-up | 4403 |
| 1963-72 | Gladiator, Jeepster | 4403 |
| 1967-75 | CJ5, CJ6 | 4405 |
| 1964-66 | CJ Models | 4401 |
| 1955-63 | CJ Models | 4405 |
| 1946-48 | CJ Models | 4401 |
| 1976-86 | Models with Optional OEM Wheel • | 3162 |
| 1974-75 | Cherokee, Wagoneer, Pick-up • | 3196 |
| 1972-73 | Commando, Wagoneer, Pick-up | 4403 |

Installation Kits

Installation Kits

PLEASE READ IMPORTANT INFORMATION REGARDING ALL APPLICATIONS
 • Indicates Billet Style Kit Available.
GREY Indicates EURO Style Kit will fit Signature Series Steering Wheels only.

| JEEP (Continued) | | |
|------------------|---|--------|
| 1964-66 | CJ Models | 4401 |
| 1955-63 | CJ Models | 4405 |
| 1946-48 | CJ Models | 4401 |
| MAZDA | | |
| 1992-94 | Autos | 4545 |
| 1976-91 | Autos (see exceptions) (Exceptions: No coverage for 1986-87 MX6 or 929) | 3597 |
| 1974-75 | RX2/RX4 | 3597 |
| 1971-75 | RX3 | 4284 |
| 1971-73 | RX2/RX4/616 | 4284 |
| 1971-72 | R100/1200 | 3597 |
| 1991-94 | Navajo | 4288 |
| 1994 | Pick-up | 4288 |
| 1992-93 | Pick-ups and Van | 4545 |
| 1981-91 | Pick-ups and Van | 3597 |
| 1974-75 | Rotary Pick-up | 3597 |
| 1971-80 | B1600/B2000 Pick-up | 4284 |
| MITSUBISHI | | |
| 1990-94 | Eclipse | 4391 |
| 1990-93 | Precis | 4541 |
| 1982-94 | Cordia, Tredia, Starion, Mirage Montero, Pick-up, Van | 3390 |
| 1991-93 | Galant | 4391 |
| 1982-90 | Galant | 3390 |
| NISSAN (DATSUN) | | |
| 1990-93 | STANZA, 240SX | • 3560 |
| 1985-89 | MAXIMA, STANZA, 240SX | 3596 |
| 1984-88 | 200SX, 300ZX | 3596 |
| 1983-89 | Pulsar NX | 3596 |
| 1991-94 | Sentra | • 3560 |
| 1982-90 | Sentra | 3596 |
| 1980-83 | SX200 | • 3592 |
| 1979-83 | 210 | • 3592 |
| 1978-84 | 810, 510, Stanza | • 3592 |
| 1977-79 | SX200, F10, 300FX, 310 | 4590 |
| 1977 | 810 | 4599 |
| 1976-78 | 710 | 4599 |
| 1976 | 610 | 4599 |
| 1973-75 | 610 | • 3592 |
| 1974-78 | B210 | 4590 |
| 1974-75 | 610/710 | • 3592 |
| 1971-73 | 1200 | 4590 |
| 1970-83 | 240Z/260Z/280Z/280ZX | • 3592 |
| 1968-72 | Most Models (Autos only) | 4581 |
| 1986½-94 | Pick-ups, Pathfinder, Van, Axxess • 3560 | |
| 1978-85½ | Pick-up | • 3592 |
| 1972½-75 | Pick-up | 4591 |
| OLDSMOBILE | | |
| 1969-83 | All Models, including Silhouette (except telescopic) | • |

| 1967 | All Models | • | 3162 |
|--|--|---|------|
| 1965-66 | All Models (Tilt column only) | | 4193 |
| 1964-66 | All Models (Std. column only) | | 4181 |
| 1961-63 | Cutlass | | 4161 |
| 1949-63 | All Models (Except Cutlass) | • | 3162 |
| PONTIAC | | | |
| 1969-93 | All Models (except 1988-on LeMans) | • | 3196 |
| 1967-68 | All Models | • | 3162 |
| 1965-66 | All Models (Tilt column only) | | 4193 |
| 1964-66 | All Models (except GTO) | | 4181 |
| 1964-66 | GTO Only | | 4187 |
| 1961-63 | GTO, Tempest, LeMans | | 4161 |
| 1949-63 | All Other Models | • | 3162 |
| PORSCHE | | | |
| 1977-89 | 924, 924S | | 3568 |
| 1983-89 | 944, 944 Turbo | | 3568 |
| 1960-61 | All Models | • | 3565 |
| 1949-59 | All Models | | 4563 |
| SATURN | | | |
| 1991-92 | All Models | | 4190 |
| STERLING | | | |
| ALL | All Models | • | 3595 |
| STUDEBAKER | | | |
| 1963-65 | Avanti | | 4286 |
| 1957-68 | All Models (exc. Hawk, Lark) | | 4401 |
| 1957-68 | Hawk & Lark | | 4291 |
| SUZUKI | | | |
| 1985-94 | Samurai, Sidekick | | 4510 |
| 1989-94 | Swift | | 4510 |
| TOYOTA | | | |
| 1989-92 | All Models (except 1989 MR2) | | 3584 |
| 1985-89 | MR2 | | 3593 |
| 1988-92 | Camry, Corolla | | 3584 |
| 1986-92 | Celica, Supra | | 3584 |
| 1976-88 | All Models (except above models) | | 3593 |
| 1971-75 | Celica | | 4586 |
| 1971-73 | Carina | | 4586 |
| 1971-75 | Corolla (No coverage earlier models) | | 4586 |
| 1968-75 | Corona (No coverage 76-on) | | 4579 |
| 1989-94 | Pick-up, All Models, inc. T-100 | | 3584 |
| 1979-88 | Pick-up, All Models | | 3593 |
| 1968-78 | Pick-up, All Models | | 4579 |
| 1989-90 | Van Wagon | | 3584 |
| | Previa - No kit available | | |
| 1984-88 | Van Wagon | | 3593 |
| 1976-88 | Landcruiser | | 3593 |
| 1973-75 | Landcruiser | | 4579 |
| VOLKSWAGEN | | | |
| 1989-93 | Fox | | 3568 |
| 1980-88 | Pick-up, Bus- (No coverage '79 & prior) | | 3568 |
| 1974-88 | All Autos (except 1975½-77 Dasher, 1974 Super Beetle) | | 3568 |
| 1960-73 | All Models - Autos | • | 3565 |
| Note: Model 4000 extension may also be required. See Grant catalog. | 1949-59 Beetle only | | 4563 |

Installation Accessories

5891 Steering Wheel Puller

Used for pulling original wheel or previously installed Grant wheel from shaft.



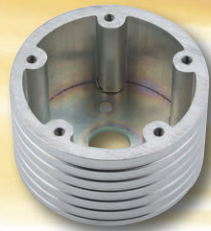
4000



4001



4002



4003



5891



4008



4009

Extension Kits

Installs between Grant Installation Kit and Grant Signature Series Steering Wheels.

4000 Two Inch Steering Wheel Extension Kit

4001 One Inch Steering Wheel Extension Kit

4002 One Inch Polished Steering Wheel Extension Kit

4003 Two Inch Polished Wheel Extension Kit

Installing Grant Signature Series Steering Wheels on other Manufacturer's Installation Kits

4007 Install Grant Steering Wheel on standard Le Carra Brand installation kit. Polished finish.

4008 Install Grant Steering Wheel on standard 6-hole Momo Brand installation kit. Black finish.

4009 Install a Grant 452, 457 or any Momo 6 Bolt Steering Wheel on a Grant 5 Bolt Billet Installation kit.



4007

SIDE BY SIDE & GOLF APPLICATIONS

STANDARD KITS FOR ALL WHEELS

| | | |
|-----------|-------------------------------|--------|
| 2006-On | Arctic Cat Prowler - Wild Cat | • 3670 |
| Thru 1983 | Club Car | • 3670 |
| Thru 1982 | Columbia Par Car | • 3670 |
| 1970-C | E-Z-GO Golf Cars & ST Series | • 3670 |
| All | GEM | • 3670 |
| All | John Deere Gator | • 3670 |
| 03-C | Kubota RTV 900 Series | • 3670 |
| All | Polaris Ranger | • 3670 |
| All | Polaris RZR | • 3670 |
| 05-C | Tomberlin E-merge and Andvil | • 3670 |

SIDE BY SIDE & GOLF APPLICATIONS

| | | |
|-----------|---|--------|
| 84-C | Club Car (Except Precedent & XRT Series) | • 3671 |
| 2006-2009 | Yamaha G1-G19 (Rhino) | • 3672 |
| All | Yamaha G-Max | • 3672 |
| All | Yamaha Drive | • 3672 |
| All | Kawasaki Teryx | • 3677 |
| 04-C | Club Car Precedent & XRT Series (Hex Shaft) | • 3670 |

MARINE APPLICATIONS

STANDARD KITS FOR ALL WHEELS

Mercury Marine - Square Shaft

All Brands - 3/4" Tapered Shaft with Keyway

BILLET STYLE KITS (FOR 5-BOLT WHEELS ONLY)

All Brands - 3/4" Tapered Shaft with Keyway Polished Billet

All Brands - 3/4" Tapered Shaft with Keyway Black Billet

BLACK OEM STYLE HUBS (FOR 5-BOLT WHEELS ONLY)

All Brands - 3/4" Tapered Shaft with Keyway (Short Style 1-3/4" High)

All Brands - 3/4" Tapered Shaft with Keyway (Tall Style 2-3/4" High)

All Brands - 19 Spline (OMC Type) Shaft (Tall Style 2-3/4" High)

CUSTOM STEERING COLUMNS

All All Ididit Columns • 3670

All Flaming River w/GM Splined (36 tooth) Shaft Only • 3670

No Coverage for FORD Splined (40 tooth) Shaft Columns

Notes

